

# CASE STUDY

**PROJECT:** Belmont Street, Glasgow



**Stancliffe Stone**  
BRITISH STONE, CRAFTED BY DESIGN

## STONE DESCRIPTION:

This fine to medium grained sandstone is extracted from Dale View Quarry, Stanton-by-Dale, Derbyshire is now specified in Scotland on a regular basis and used widely across the UK for all scale of projects – from major prestigious city centre schemes to commercial, residential developments and private homes.

The striking colour of Stanton Moor sandstone features a buff base with brown, gold and wild pink variation, adding depth and interest to both traditional and contemporary building designs. Extensive reserves allow selection from either Buff or Pink colour options.

## PROJECT SUMMARY:

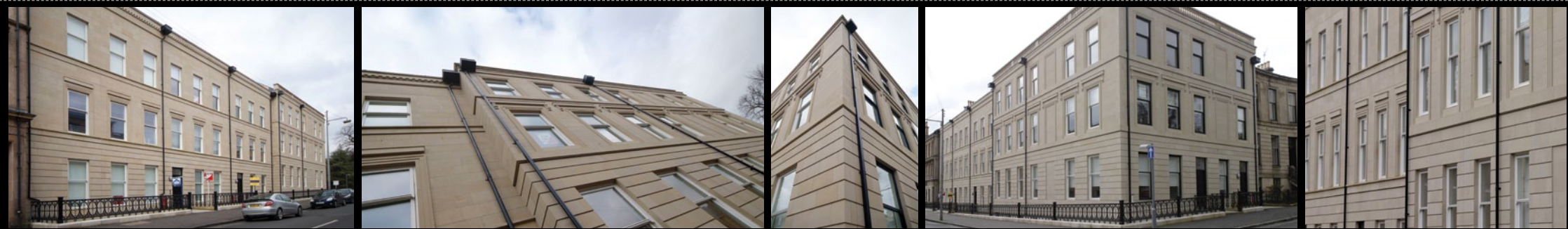
This imposing modern development has been designed to fit sleekly into the historical West End of Glasgow. Replicating the new development as closely as possible to the original building. Making this a 'must see' development.

## THE BUILD SOLUTION:

The track record of Stanton Moor is enviable with large-scale projects such as Belmont Street. The aesthetics of this sandstone help integrated the new and old, by achieving the established grid street pattern associated with street.

This handset project applies an unrivalled character to this build, with the use of clean buff Stanton Moor sandstone and smooth masonry lines, this impressive structure fits perfectly well into its fashionable location.

<b>Stone Supplier:</b>	Stancliffe Stone - Quarried British Dimensional Masonry and Walling products
<b>Stone Type:</b>	Stanton Moor Buff Sandstone
<b>Petrographic Description:</b>	Carboniferous Sandstone
<b>Quarry:</b>	Dale View, Derbyshire
<b>Project Type:</b>	New build - Residential
<b>Product:</b>	Ashlar Cladding & Masonry
<b>Architect:</b>	Riach Partnership
<b>Contractor:</b>	Robertsons
<b>Location:</b>	Glasgow
<b>Completion:</b>	2006



BRITISH STONE, CRAFTED BY DESIGN

TALK TO US For more information call 01629 653 000, visit [www.stancliffe.com](http://www.stancliffe.com) or email [info@stancliffe.com](mailto:info@stancliffe.com)